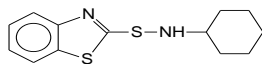


## CBS MASTERBATCH

Nitrosamine-free sulfenamide accelerator

ACTIVE MATERIAL



N-  
Cyclohexylbenzothiazole-  
2-Sulfenamide

C<sub>13</sub>H<sub>16</sub>N<sub>2</sub>S<sub>2</sub>  
M.W.: 264  
CAS: 95-33-0  
EINECS: 202-411-2

### PROPERTIES:

Mixland+® CBS masterbatch is a medium fast primary sulfenamide accelerator for NR, IR, BR and especially SBR, combining a fast cure with a delayed action.

Mixland+® CBS masterbatch has the ability to provide fast efficient mixing of difficult, highly loaded carbon black reinforced compounds, without sacrificing scorch safety or physical properties. Its vulcanisates have good heat ageing and tear resistance.

Mixland+® CBS masterbatch is used alone or can be boosted by small additions of other accelerators: thiurams or guanidines, to adjust and optimise the scorch / cure relationship for particular application conditions.

Mixland+® CBS masterbatch shows a good dispersion and a high degree of processing safety. It allows prolonged and difficult high-temperature mixing and manufacturing processes to be carried out without problems due to scorch; yet at 135 -150° C it still produces a fast cure effect.

### APPLICATIONS:

Tyres, buffers, conveyor belting, seals, hose, profiles, footwear, cable sheathing, insulation, etc.

### TYPICAL VALUES:

Melting point: 97°C  
Purity: 97.0%  
Specific gravity: 1.3

### REMARKS:

Slightly discolouring  
Non-staining

MASTERBATCH

PRODUCT	Active Content (%)	Colour N for Natural P for Pigment	Filtration (microns)	Binder	Mooney ML (1+4) 50° Typical value	Density	Shore Hardness
						Typical Value	
<b>CBS 80 GA F140</b> ①	80	Bluish* (P)	140	E/AA	30	1.18	33
<b>CBS 75 BA F140</b> ②	75					1.16	25

\*Depending on natural variation of CBS

**GA:** Pellets on ethylene-alkyl-acrylate binder

**BA:** Slabs on ethylene-alkyl-acrylate binder

### SAFETY & TOXICITY:

For detailed information, please refer to our Material Safety Data Sheet. **NITROSAMINE FREE**

### PACKAGING & STORAGE:

- ① PE bags weight : 20 kg net-CP3 pallet : 640 kg net.
- ② Cardboard box weight : 25 kg net.-CP3 pallet : 600 kg net.

**Do not pile more than 2 pallets height**

Shelf-life : 1 year in its original packaging

Store in a dry and cool place and away from direct sources of heat or sunlight

**Compared to a traditional EVA/EP(D)M binder, MIXLAND+® masterbatch allows:**

- ✓ Dust free products with a high level of filtration up to 100 µ.
- ✓ Tack free products at room temperature.
- ✓ Lower Mooney viscosity, improving quality of dispersion.
- ✓ Scrap rate reduction thanks to filtration.
- ✓ Wider compatibility with other elastomers.

The information contained in this leaflet is based on tests carried out by our laboratories and data selected from the literature but shall in no event be held to constitute or imply any warranty or undertaking. No liability whatsoever can be accepted with regard to the handling, processing or use of the products concerned, which must in all cases be employed with regard to all relevant regulations and/or legislation in the country or countries concerned.