



Kemai Chemical Co., Ltd.

No.72 Hai Xin Road, Gu Lin Industrial Zone, Da Gang Dist.,
Bin Hai New Area, Tianjin, P.R. China.

Fax: [+86](022) 24379994 Phone:[+86](022) 24711698

<http://www.tjkemai.com/>

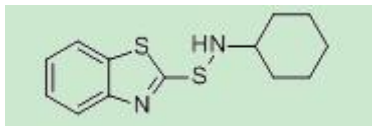
Technical Data Sheet

Accelerator CBS (CZ)

N-Cyclohexyl-2-benzothiazole sulfenamide

CAS NO.: 95-33-0

Chemical Molecular: C₁₃H₁₆N₂S₂



Chemical Structure:

FUNCTION

CBS is a primary amine based, general purpose primary accelerator combining a fast cure with good scorch safety and excellent modulus development.

APPLICATION AND PROPERTIES

A medium fast primary accelerator suitable for NR, IR, SBR, NBR, HR and EPDM. An outstanding delayed action accelerator. Be most effective and safe when used at ordinary processing temperatures, causing no scorches.

Vulcanized show excellent physical property complete.

HANDLING PRECAUTIONS

For detailed information on toxicological properties and handling precautions please refer to the current Safety Data Sheet.

STORAGE

Keep container tightly closed in a cool, well-ventilated place.

The recommended maximum storage life is 6 month when stored under normal conditions.

Package:25Kg paper bag

SPECIFICATION:

Name of Index	Specification		Test Method
Appearance	Grayish white, light-yellow granular	Grayish white, light-yellow powder	
Initial melting point °C ≥	98.0	98.0	HG/T 2096-2006
Heating loss % ≤	0.30	0.30	HG/T 2096-2006
Ash content % ≤	0.30	0.30	HG/T 2096-2006
Residue on sieve (150µm) % ≤	-	0.05	HG/T 2096-2006
Oil Content %	-	1.0-2.0	
Methanol insolubles % ≤	0.50	0.50	HG/T 2096-2006
Purity % ≥	97.0	97.0	HG/T 2096-2006
Free amine % ≤	0.50	0.50	HG/T 2096-2006
	Purity, Free Amine is only tested as customers' request		